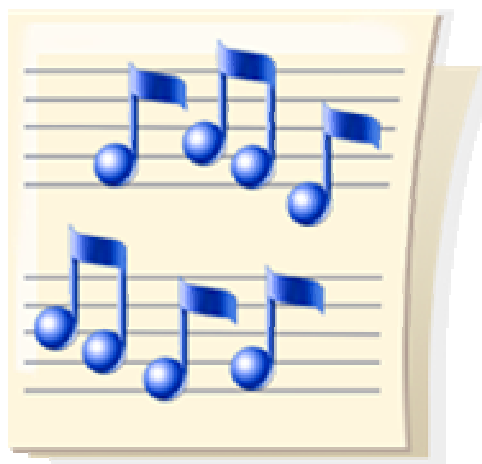


# University of North Alabama

## Department of Music



# STUDENT HANDBOOK

## 2007-2008

*REV. 1/08*

## Placement Exams

All incoming freshmen and transfer students are required to take a music theory placement examination prior to their acceptance into the music program. The test is usually given during the summer SOAR sessions for freshmen and transfer students; however, it may be taken at a different time with prior approval. The purpose of the test is to determine proper placement in *Music Theory* sequence of courses. Students lacking the basic fundamental skills necessary to be successful in *Music Theory I* will first enroll in *Fundamentals of Music*.



---

**In addition to the course requirements for the major and the general education requirements, all music majors must also meet the following requirements:**

- 1. Participate with a major performance ensemble (University Band, Collegiate Singers, University Chorale, Symphony-Orchestra) in the student's area of specialization each semester of enrollment at the University as full-time students. Students are not required to participate during the term in which they are enrolled in student teaching.**
- 2. Attend the required amount of recitals as outlined in the Recital Attendance Policy, including Departmental Recitals every other Wednesday at noon. A recital list will be provided each semester with scheduled recital and performance dates.**
- 3. Take and pass a sophomore proficiency examination that includes proficiency in piano and performance on the student's major applied instrument.**
- 4. Music Education majors must present a 30-minute Senior Recital.**
- 5. Performance majors must present a 30-minute Junior Recital and a 50-minute Senior Recital.**
- 6. Students in the field of Music Education (Choral or Instrumental) will be expected to pass the Praxis "Music: Content Knowledge" exam BEFORE they are allowed to be placed in their student teaching school.**

General information about the Praxis can be found at:

[www.ets.org/praxis](http://www.ets.org/praxis)

Information about Alabama locations that administer the Praxis can be found by finding "Alabama" on the drop-down menu on this homepage.

---

## **Ensembles**

All music majors must perform with at least (1) one large ensemble each semester they are enrolled as a full-time student at UNA (12 credit hours). Each family of instruments has a specific large ensemble that it is assigned:

Brass, Woodwind and Percussion majors will enroll in **University Band**.

Vocal and Choral majors will enroll in at least one choral ensemble, one of which will include **University Chorale or Collegiate Singers**.

String majors will enroll in **Shoals Symphony at UNA**.

Music majors are also encouraged to perform with Chamber Ensembles, including: Jazz Band, Percussion Ensemble, Chamber Choir, Vocal Jazz Ensemble, String Ensembles, Brass Ensemble and others.

## **Recital and Concert Attendance**

Music majors are required to attend a specific number of recitals and concerts (Wednesday Departmental recitals, guest or faculty recitals, ensemble performances, other concerts sponsored by the department, or community concert series performances) per semester as outlined in the **Recital Attendance Policy**. At all of the approved Music Department recitals, students will receive a recital attendance slip to be filled out and turned in at the completion of the concert. These slips will then be turned in to Janice Anderson and tallied at the end of the semester. Your applied music teacher is responsible for issuing your **Recital Attendance Policy** at the beginning of each semester. The form is then signed by you and returned to your applied instructor for their student files.

## **Juries**

All students enrolled in applied music must perform before a jury at the end of each semester, with exceptions granted to juniors and seniors giving recitals in that particular semester or at the discretion of the instructor. Juries will be held at a designated time appropriated by the jury. Please check with your applied instructor as to the assigned date for your jury. The performance will consist of appropriate repertoire for the instrument or voice, to be selected by the applied music teacher. Music majors may also be requested to sight-read and/or play scales in their principal applied area. Juries will be approximately 10 minutes in duration. Evaluations will be made available to the applied music instructor no later than the last day of the final exam period. An unexcused absence from a jury will result in failure in Applied Music.

## **Sophomore Examination**

All music majors (Commercial Music, Sacred Music, Music Performance, Vocal/Choral and Instrumental Music) are required to take a Sophomore Examination which includes Piano Proficiency and performance on the student's major instrument. More specific requirements for the student's instrument may be obtained from the instructor or music office. Students must:

- 1) Complete the minimum course requirements in piano and demonstrate proficiency in piano in front of the music faculty **before the student is allowed to student teach (music education) or graduate (performance/commercial/other).**

Students are encouraged to enroll in Class Piano I and II (MU131, MU132), before taking a 1 credit hour applied piano lesson.

- 2) Be currently enrolled in the 200-level of applied music and, with the approval of their instructor, perform on their major applied instrument before the music faculty. Commercial Music majors should check with their applied instructor for examination requirements.

Other aspects of the sophomore screening may include the following:

1. Review of the student's GPA.
2. A sight-singing exam.
3. Sight-reading with the student's major instrument or voice.
4. Review of the quality of the current semester's jury in the principal applied area.
5. Review of the results of the piano proficiency exam.

Upon completion, the faculty will then determine whether the student will be allowed to continue as a music major and will notify the department chair of its recommendation. The Chair will then inform the student in writing. **Students will be allowed only two attempts to pass the Sophomore Examination.** Screenings will be done during the exam period of each semester, usually during the student's applied jury.

**PLEASE NOTE:** All aspects of this review, including the piano proficiency requirement, must be passed before a Junior Recital hearing/preview (or Senior Recital hearing/preview for Music Education majors) may be scheduled.

# Piano Proficiency Exam A

## University of North Alabama

### Department of Music

All music majors, with the exception of commercial music majors, will be required to complete the following proficiency exam. It is hoped that this exam will be passed by the end of the sophomore year. However, it must be passed before giving the senior recital. Please note that these requirements are the minimum needed for a career in the music field.

1. Sight-read a simple melodic-style piece of four to eight measures, written on the Grand Staff, and one 3-voice open score of approximately four measures. It may be played more slowly than the designated tempo.
2. Play the following major scales and their related minor scales, hands together, two octaves by memory. Also included is the cadence pattern:  
C, G, D, A, E, B, F, Bb, Eb, Ab, Db, a, e, b, d, g, c, f
3. Play one prepared piece by memory. The teacher and the student's level will determine the level of difficulty.
4. Play "America" (F Major). Copy available in the Music Office.
5. Prepare two piano accompaniments from the Spectrum of Music book, available in the Music Listening Library. One of the selections must be in a minor key. The accompaniment patterns should be different.
6. Supply an appropriate accompaniment to the melody given.

The Piano Proficiency is held on Study Day each semester. Each student will have approximately 20 minutes to take the exam. Those sections not passed will then be taken the following semester on Study Day.

**Piano Proficiency Exam Level B**  
**Commercial Music**  
**University of North Alabama**  
**Department of Music**

1. Sight-read a simple melodic-style piece of four to eight measures, written on the Grand Staff. It may be played more slowly than the designated tempo.
  
2. Play the following major scales and their related minor scales, hands together, one octave by memory. Also included is the cadence pattern.  
C, G, D, A, E, F, Bb, Eb, a, e, d, g, c.
  
3. Supply an appropriate accompaniment to the melody given.

### Junior/Senior Recital Requirements

Performance majors: It is recommended that Performance Majors present a Junior Recital (20-30 minutes) and it is required that Performance Majors present a Senior Recital (at least 50 minutes.)

Music Education majors will be required to perform a Senior Recital (at least 30 minutes) only.

No student may present a recital until authorized by the faculty, following a Hearing/Preview to be scheduled no more than FIVE WEEKS and no less than THREE WEEKS prior to the projected recital date. Each student should complete and turn in to their applied teacher a **Recital Hearing/Preview Approval Form**. Authorization by the faculty will be contingent upon the quality of the performance at the Hearing. Recitals may be performed during the Fall and Spring terms only, and Music Education majors must perform the recital the semester prior to Student Teaching. Student attendance at these recitals counts towards recital attendance requirements.

### Attendance and Repertoire Requirements

Teachers have the right to set attendance requirements for classes and applied lessons. It is the responsibility of the teachers to communicate these requirements to students and for students to inquire about them at the beginning of each semester. All students will receive course syllabi, which will outline the attendance requirements for these classes.

The attendance policy for ensembles is determined by the director of each respective ensemble. Since performance in an ensemble is a team effort and the musical result will be diminished for the entire group if individuals are absent, **no unexcused absences are allowed** from either rehearsals or performances. Any unexcused absence or excessive absences for any reason can result in the lowering of the grade for the course, and failure to attend a performance will result in a failing grade for the class. Students must present excuses to the instructor in writing.

Applied teachers will determine their own repertoire requirements. Students have the right to request repertoire requirements in writing at the beginning of each semester.

<p><b>NOTE: Music Students with applied instruments other than piano should check with their individual instructors for specific proficiency requirements, or may be made available through Music Office.</b></p>
---

### Facilities and Instruments

Lockers are available in the music area on the first floor on a first-come-first-served basis. Some university-owned instruments and instrument storage lockers on the first floor are available to music majors and participants in ensembles. See your ensemble conductor concerning the use of instruments and lockers. All instruments must be returned at the end of each semester and students will be held liable for any damage to the instruments.

