



Headquarter Staff Guide

Table of Contents

Introduction	3
Mission.....	3
Definition of a Fraternity/Sorority	3
Governing Councils	3
College Panhellenic Council (CPH)	3
Independent Greek Council (IGC)	3
Interfraternity Council (IFC)	3
National Pan-Hellenic Council (NPHC)	4
Reports.....	4
Calendar of events	4
Community grade reports	4
Chapter Rosters	4
Student Engagement	4
Logistics.....	5
Parking	5
Food	6
Policies and Procedures	7
FSL Handbook	7
Housing	7
Council Governing Documents	7
Anti-Hazing Policy	8
Campus Resources	8

Introduction

Mission

The University of North Alabama's Fraternity and Sorority Life is dedicated to enhancing the undergraduate fraternity and sorority experience by fostering an inclusive community, providing academic, personal, social, service, and leadership opportunities, and promoting a strong values-based Fraternity and Sorority community.

Definition of a Fraternity/Sorority

The University of North Alabama defines a fraternity/sorority as an organization that exists to promote fraternal relationships and personal development; requirement for membership is subjective and is not limited to a specific field of study, class year, etc.; and members are not typically permitted to hold membership in other identified fraternities/sororities at the University. Organizations that engage in new member education, ceremonies of initiation, ritual and/or other Fraternity and Sorority Life artifacts (e.g., bigs/littles, wearing letters, etc.) will be considered a fraternity/sorority.

Governing Councils

College Panhellenic Council (CPH)

There are currently four active National Panhellenic Conference (NPC) sororities in the College Panhellenic Council (CPH) at UNA (listed below in Alphabetical Order).

1. Alpha Delta Pi
2. Alpha Gamma Delta
3. Phi Mu
4. Zeta Tau Alpha

Independent Greek Council (IGC)

There are currently two active sororities and three active fraternities in the Independent Greek Council (IGC) at UNA (listed below in Alphabetical Order).

1. Alpha Delta Chi
2. Alpha Mu Lambda
3. Lambda Sigma Phi
4. Phi Mu Alpha
5. Sigma Alpha Iota

Interfraternity Council (IFC)

The Interfraternity Council (IFC) currently governs 7 active chapters and 1 interest group. Of the 8 organizations, 6 are members of the North-American Interfraternity Conference (NIC). (Organizations are listed below in Alphabetical Order).

1. Alpha Sigma Phi (interest group)
2. Alpha Tau Omega
3. Delta Chi
4. Kappa Sigma

5. Phi Gamma Delta
6. Pi Kappa Alpha
7. Sigma Alpha Epsilon
8. Sigma Chi

National Pan-Hellenic Council (NPHC)

There are currently four active sororities and three active fraternities in the National Pan-Hellenic Council (NPHC) at UNA (listed below in Alphabetical Order).

- Alpha Kappa Alpha Sorority, Inc.
- Alpha Phi Alpha Fraternity, Inc.
- Delta Sigma Theta Sorority, Inc.
- Kappa Alpha Psi Fraternity, Inc.
- Phi Beta Sigma Fraternity, Inc.
- Sigma Gamma Rho Sorority, Inc.
- Zeta Phi Beta Sorority, Inc.

In August 2018, Omega Psi Phi Fraternity, Inc. was removed from campus due to hazing. They will be eligible to return in August 2022.

Reports

Community reports are stored on our website (www.una.edu/fsl). Recent reports are hyperlinked below.

Calendar of events

Per our event policy, chapters must register events with our office. All events (except those listed as secret, such as ritual events) are published to our FSL Google Calendar. This calendar is available on our website at www.una.edu/fsl.

Community grade reports

- [Spring 2021](#)
- [Fall 2020](#)
- [Spring 2020](#)
- [Fall 2019](#)
- [Spring 2019](#)
- [Fall 2018](#)

Chapter Rosters

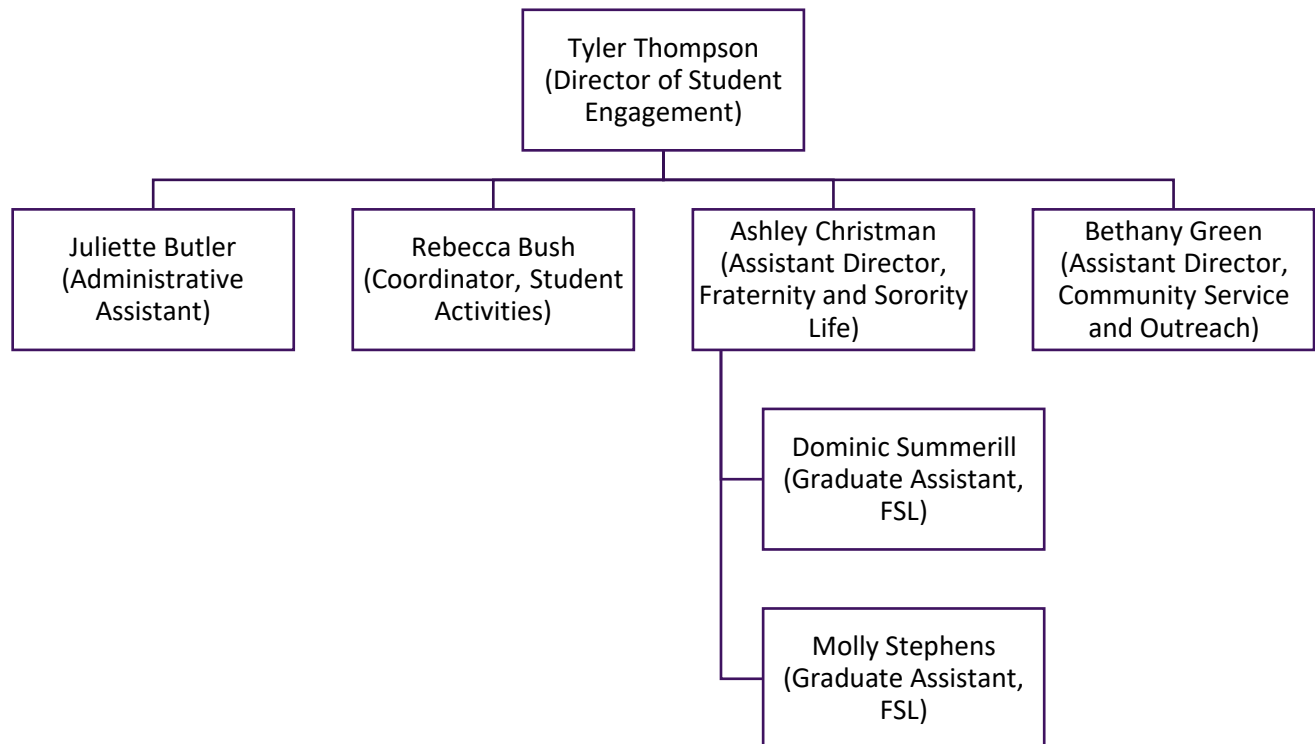
Chapter rosters are not published online, however, headquarters may request a copy of the university's chapter roster by emailing tgreeklife@una.edu.

Student Engagement

Fraternity and Sorority Life is a part of the Student Engagement Center at UNA. Student Engagement is a department within the Student Affairs division.

Student Engagement also oversees Alternative Breaks, Feeding the Pride Food Pantry, the Miss. UNA Pageant, Registered Student Organizations (RSO) and the allocation process, the Student Government Association (including Freshman Forum, Senate, and University Program Council), and Volunteerism.

Student Engagement is staffed by a Director, two Assistant Directors, one coordinator, two Graduate Assistants, , one Administrative Assistants, and several student workers.



Student Engagement is located in the Guillot University Center (GUC) on the first floor, near the mailroom (Room 163).

Campus business hours are Monday through Friday, 8am-4:30pm (summer hours may differ).

Logistics

Parking

During normal business hours, all guests must park in designated guest parking.

The following address will direct you to the visitor parking area:

*1 Harrison Plaza
Florence, AL 35632*

The visitor parking lot is at the intersection of North Seminary Street and East Irvine Avenue. When you pull into the parking area, you will see a roundabout. The visitor parking is the second entrance on your right after entering the roundabout. Once parked, walk toward the fountain. At the fountain, turn left.

(you will see a bridge over the walkway). The GUC is the building directly to the left of the bridge. Once in the GUC, go past the stairs and turn left, you will see the Student Engagement Office.

If you are visiting campus outside of normal business hours, you may park in the parking lot behind the GUC. This parking lot is at the intersection of Dormitory Drive and North Pine Street. When you enter the back of the GUC from this lot, you will need to follow the hallway (it turns right and then left) to get to the stairs (there is also an elevator between the two turns). If taking the stairs, turn left and you will see the Student Engagement Office. If taking the elevator, turn right after exiting and you will see the Student Engagement Office straight ahead.



Food

There are several dining options on campus: Chick-fil-a, Starbucks, Moe's Southwest Grill, Panda Express, Burger 256, Create, Outtakes, 3rd Rock, Caffe Dallucci, and Mane Market. You can learn more about on campus dining options at <https://www.dineoncampus.com/una>

UNA is also located in walking distance of Downtown Florence, some of our favorite off campus dining options include (names are hyperlinked to the restaurant's website):

- [306 BBQ](#)
 - 322 N. Court St.
 - (256) 766-5665
- [Big Bad Breakfast](#)
 - 315 N. Court St.
 - (256) 415-8545
- [Cheesy Bob](#)
 - 1611 N. Pine St.
 - (256) 712-5179
- [Pie Factory](#)
 - 106 N. Court St.

- (256) 275-3248
- Ricatoni's Italian Grill
 - 107 N. Court St.
 - (356) 718-1002
- Rosie's Mexican Cantina
 - 302 N. Court St.
 - (256) 767-5599
- Soul: Wingery and Records
 - 105 S. Poplar St.
 - (256) 275-7434
- Taco Mama
 - 121 S. Cherry St.
 - (256) 712-4434
- Trowbridge's Ice Cream Bar
 - 316 N. Court St.
 - (256) 764-1503
- Yumm Thai Sushi
 - 117 N. Court St.
 - (256) 349-2074

If you're looking for delivery, check out DoorDash, GrubSouth, GrubHub, or UberEats,.

Policies and Procedures

FSL Handbook

The FSL handbook includes all relevant information for our chapter officers, including the guidelines and procedures from our office, with links to the council governing documents, and student organization resources. All of our FSL forms and the handbook are located on the right-side bar at www.una.edu/fsl

FSL Handbook

Housing

The four National Panhellenic Council Sororities are housed within two residence halls. The housing agreement is renewed every three years (most recently renewed for the 2018-2019 academic year). The full agreement is available in pdf form. Please email greeklife@una.edu to request a copy.

Five of the Interfraternity Council Fraternities are housed. One of those fraternity houses is located on Oakview Circle, near Kilby Laboratory School and the other four houses are located a few streets away near the Intramural Field. One of our fraternities (Phi Gamma Delta) own their house and land. The other four of our fraternities (Alpha Tau Omega, Kappa Sigma, Pi Kappa Alpha, and Sigma Chi) own their house but lease their land from the University. For copies of the land lease or rental agreement, please send a written request to greeklife@una.edu.

Council Governing Documents

Council Governing Documents are stored online so that everyone has access to the most current versions of these documents. To access the governing documents, please use the links below.

- [CPH Governing Documents](#)
- [IGC Governing Documents](#)
- [IFC Governing Documents](#)
- [NPHC Governing Documents](#)

Anti-Hazing Policy

The University of North Alabama defines hazing as an act that endangers the mental or physical health or safety of a student, or that destroys or removes public or private property, for the purpose of initiation, admission into, affiliation with, or as a condition for continued membership in a group or organization. Participation or cooperation by the person(s) being hazed does not excuse the violation. Failing to intervene to prevent and/or failing to discourage and/or failing to report those acts may also violate the anti-hazing policy.

Anyone is able to report a concern of hazing by completing the online form at https://cm.maxient.com/reportingform.php?UnivofNorthAlabama&layout_id=0.

Campus Resources

- CARE Team (Campus Assistance, Referral and Evaluation Team)
 - (256) 765-4223
 - www.una.edu/care
- Disability Support Services
 - (256) 765-4214
 - www.una.edu/disability-support
- Fraternity and Sorority Life
 - (256) 765-4248
 - www.una.edu/fsl
- Health Services
 - (256) 765-4328
 - www.una.edu/healthservices
- Student Conduct
 - (256) 765-5012
 - www.una.edu/student-conduct/
- Student Counseling Services
 - (256) 765-5215
 - www.una.edu/counseling/
- Student Engagement
 - (256) 765-4248
 - www.una.edu/students
- Success Center
 - (256) 765-4722
 - www.una.edu/successcenter
- Title IX
 - (256) 765-4223
 - www.una.edu/titleix

- UNA Police Department
 - (256) 765-4357
 - www.una.edu/police