

**Center for Writing Excellence  
Summer 2009 Report  
Dr. Robert T. Koch Jr.**

**Introduction**

The Center for Writing Excellence continued operations through the Summer I and II sessions, although the level of use did not reach the previous summer's levels.

**University Writing Center**

**Contacts** are defined as any instance of a student entering the Writing Center, recorded through log book signatures. This number is a rough, conservative, minimum for computer laboratory use,

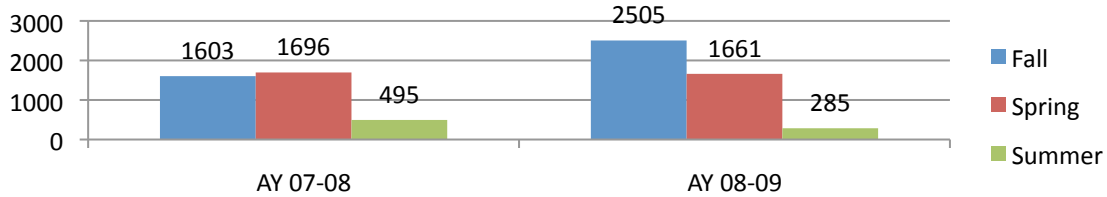


Figure 1: Contacts by Semester

**Tutorials** are the one-to-one or group interactions between tutor and client, conducted in the center or online.

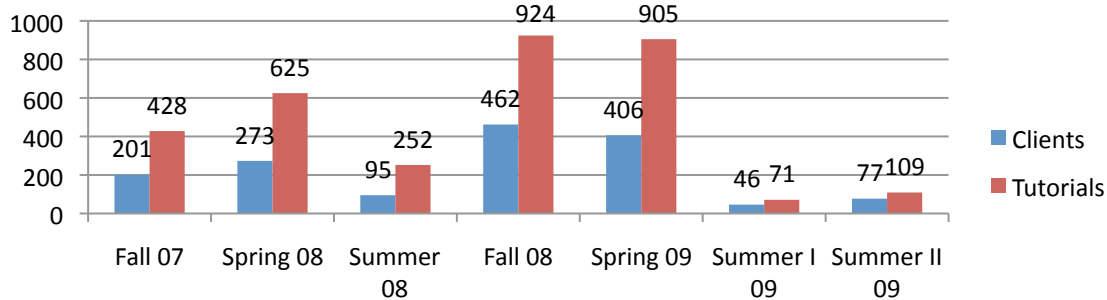


Figure 2: Clients and Tutorials by Semester

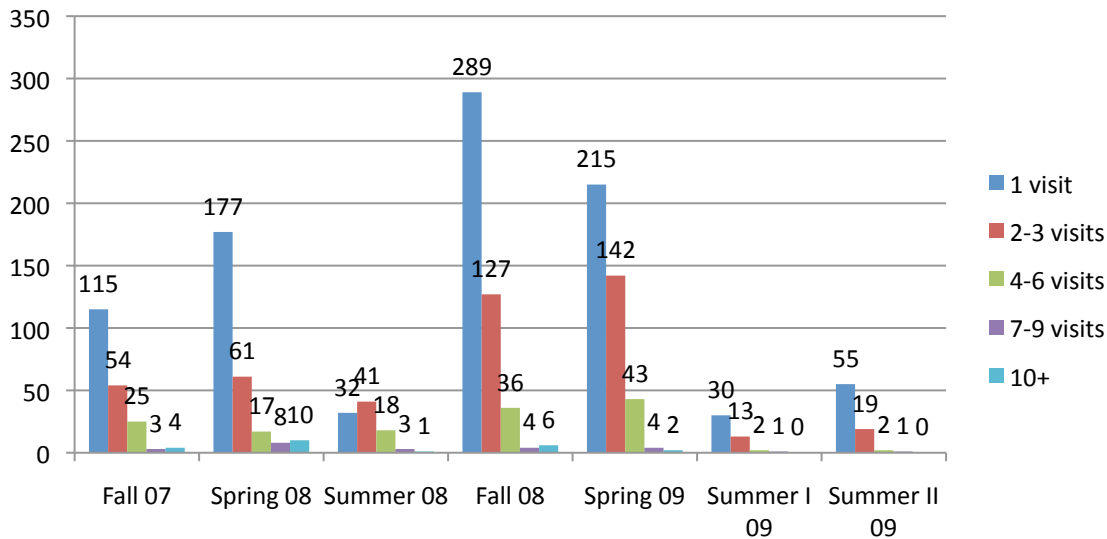


Figure 3: Clients by Number of Tutorial Visits

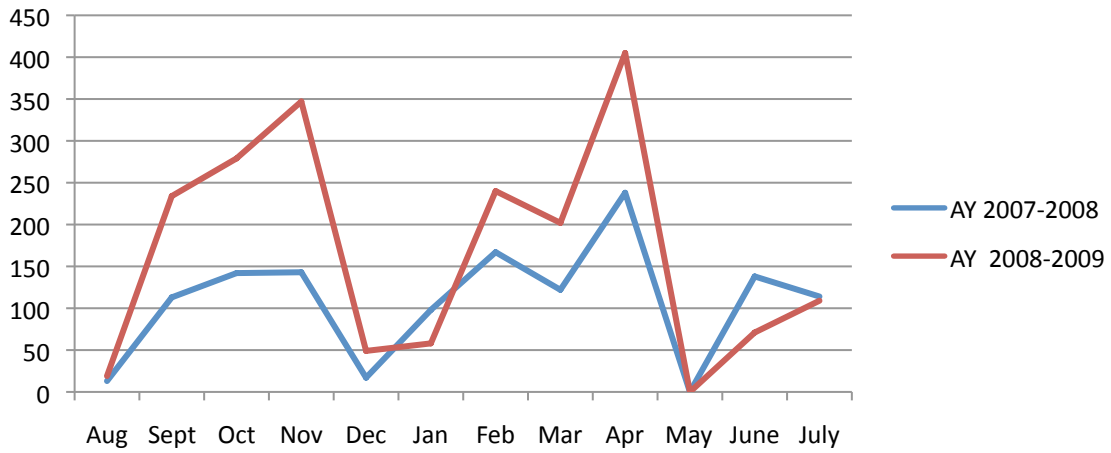


Figure 4: Tutorial Sessions by Month

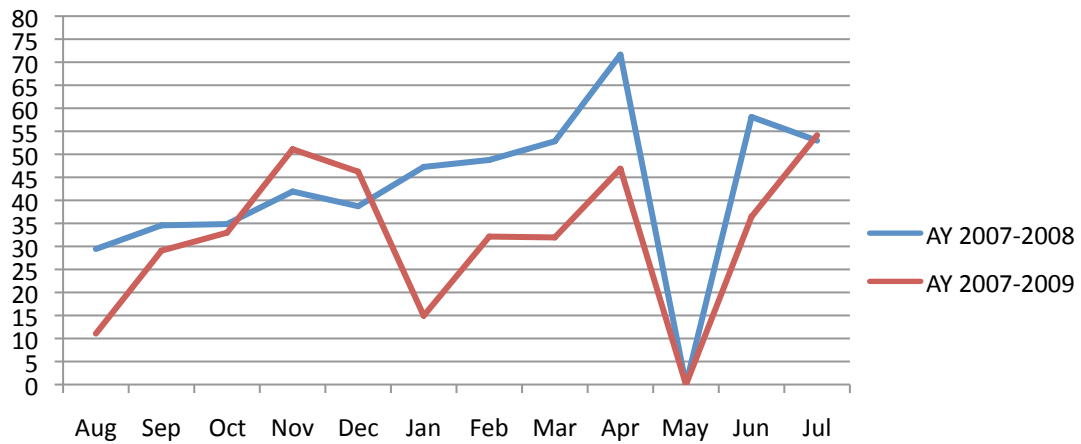


Figure 5: Use Rates by Month (%)

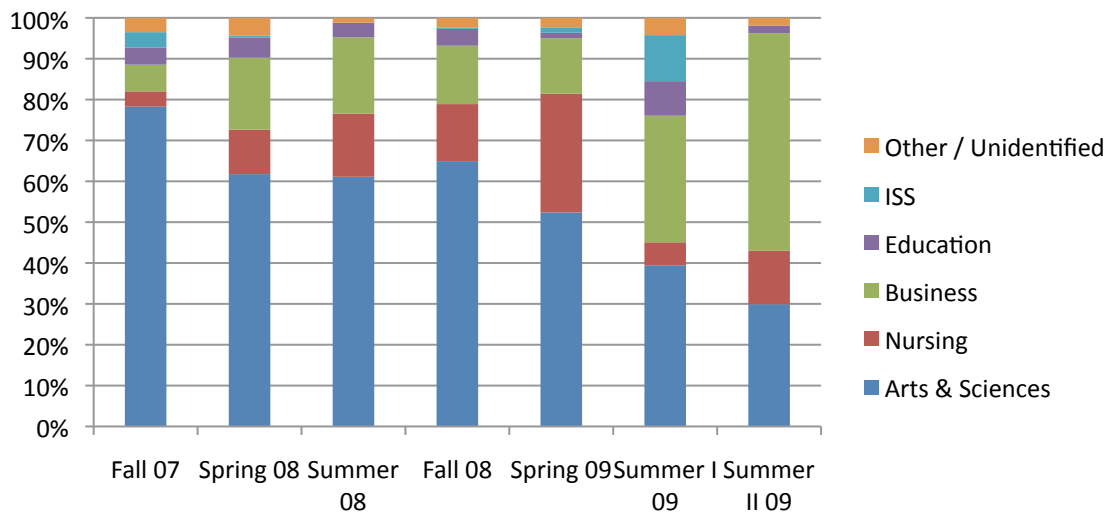


Figure 6: Tutorials by College

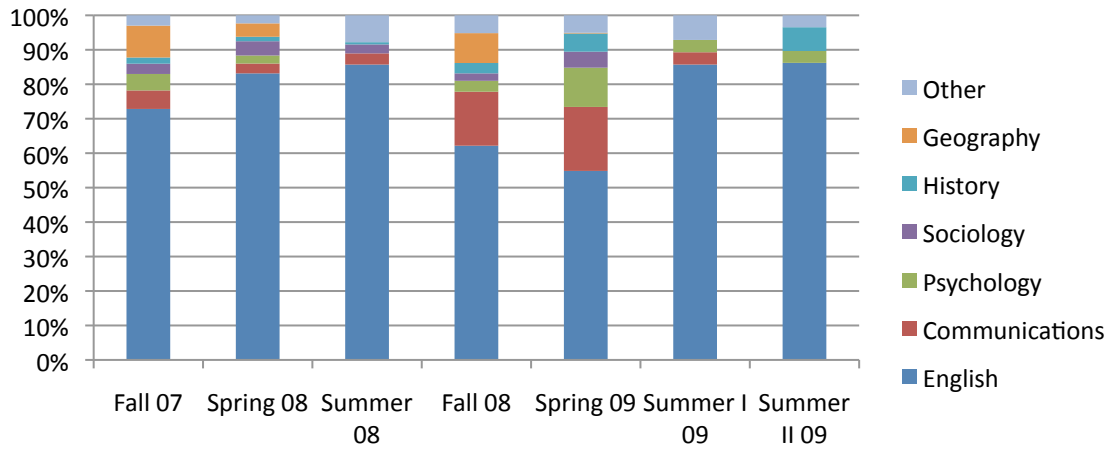


Figure 7: Tutorials in the College of Arts & Sciences

**Retention** numbers for specific at-risk demographics did not substantially increase when the summer numbers were added. Only the Project OPEN goal was met, as noted in the Spring 2009 report.

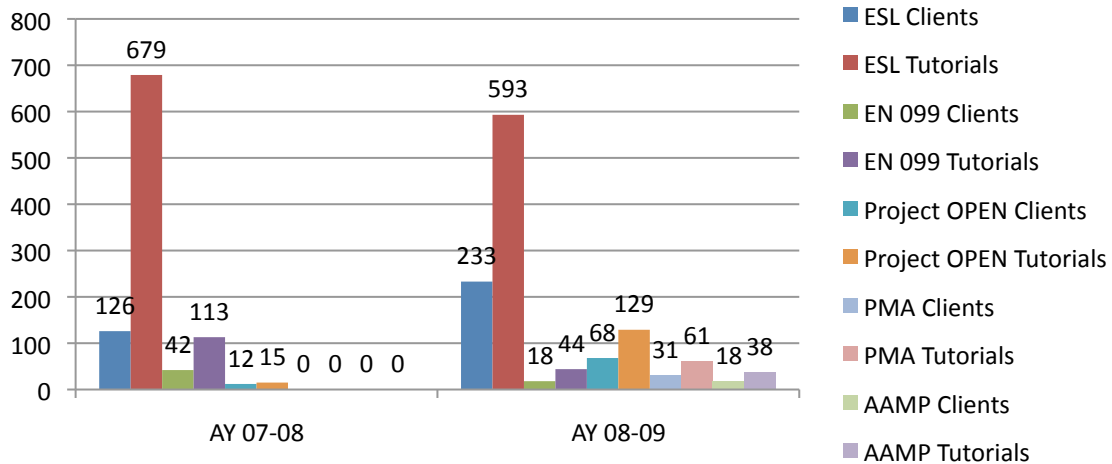


Figure 8. University Retention Data

**Workshops** were scheduled and conducted for the following eight groups and classes:

Date	Course	Topic	Participants
6/2	NU 200	APA	7
6/3	Nursing Faculty (Professional Development)	Dissertation Writing	5
6/9	IEP Bridge Class	Writing Center Orientation	9
6/11	ED 292	APA & General Writing Tips	5
6/23	MG 382W	APA & Collaborative Writing	7
7/2	Presidential Mentors Academy	Writing Center Orientation	11
7/2	NU 210 (PMA)	APA	11
7/20	SW 230	APA	9

**Community Programs (the FLPL Creative Writing Workshop)** continued through the Summer, with an emphasis on working with high school students. Six students showed up at the workshops, with only two participating on a regular basis. We attributed the low turnout to a lack of advertising in the library newsletter. The appropriate connections have been made, and we expect enrollment to improve. This program will continue because it is almost entirely voluntary, costing the university only the price of a few binders, paper, and pens.